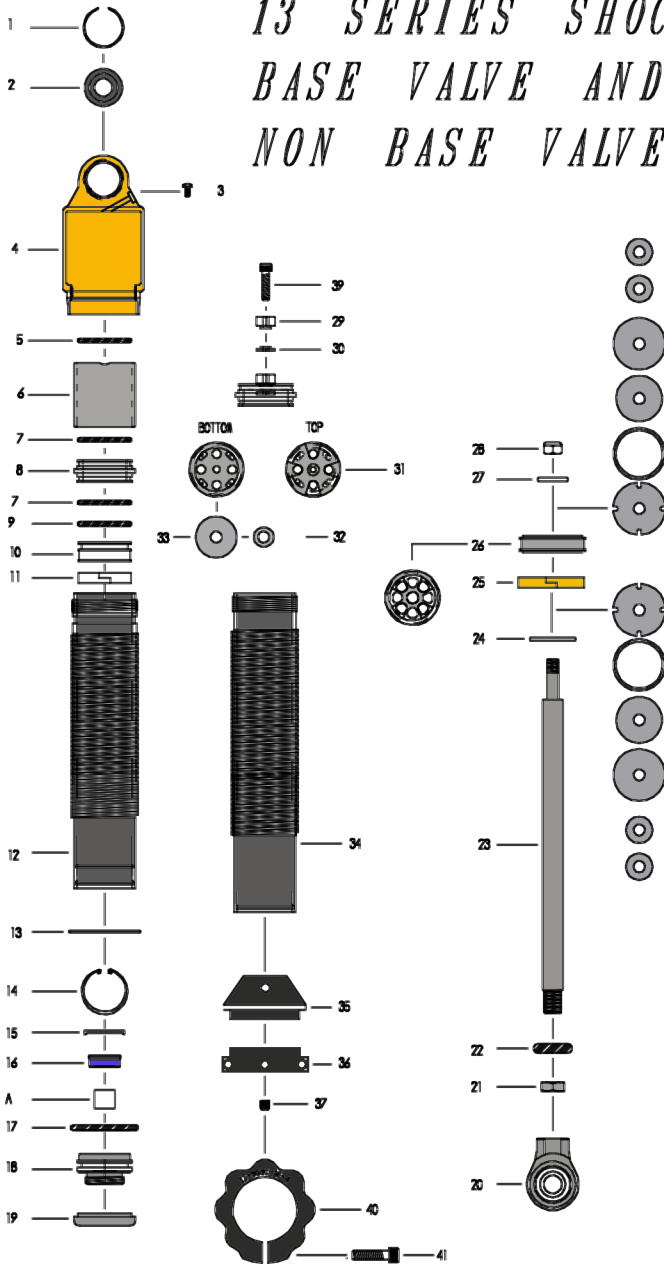


13 SERIES SHOCK BASE VALVE AND NON BASE VALVE



Drawing #	Description	13 Series
12	13 series 6" body	13-9090-1-6
34	13 series 7" body	13-9090-1-7
20	Shock Eye Assy	12-9090-5
21	Jam nut	12-9090-6
23	6" Shaft	12-9090-4-6
	7" Shaft	12-9090-4-7
22	Travel Indicator	12-9090-4-2
	Glands Body Assy with threaded ring	12-9090-2T
19	Threaded Ring	12-9090-2-11
A	Du Bushing	21-9090-2-3
16	Seal	21-9090-2-2
11	Alum Washer	12-9090-2-4
14	Snap Ring	21-9090-2-5
17	O-Ring x 2 plc	12-9090-2-9
13	Circlip 063	12-9090-3
24	Stop Washer	20-9090-8
26	Piston Standard	12-9090-21
	Piston Hybrid	12-9090-22
25	Wearband main piston	12-9090-10
27	Break Washer	20-9090-9
28	8 mm Nut	20-9090-12
xxxx	Divider Piston Body Assy std	12-9090-13
10	Divider Piston	12-9090-13-1
9	Divider O Ring	12-9090-13-2
11	Wearband divider	12-9090-13-3
8	Connector Rings	13-9090-23-1
7	O ring x 2	13-9090-23-2
xxxx	End Cap Body Assy/com and screw	13-9090-14
	End Cap Expanded Bulb	13-9090-14-1
5	O-Ring	13-9090-14-2
3	Hyper Screw	20-9090-14-3
	Coil Over Kit Assy	12-9090-17
35	Coil Over Kit Shaft Cup	12-9090-16-1
36	Coil Over Kit Threaded Ring	12-9090-16-4
37	Bolt 1/4-20	12-9090-16-5
	Shims	
	Break 14 x 50	20-9090-7-A
	Break 15 x 50	20-9090-7-K
	Break 16 x 50	20-9090-7-B
	Break 17 x 50	20-9090-7-C
	Break 18 x 50	20-9090-7-D
	Per Load 18 x 10	20-9090-7-D.1
	Break 19 x 50	20-9090-7-L
	Break 20 x 50	20-9090-7-E
	Center 25.3 x 15	12-9090-7-C15
	Ring Shim 25.3 x 63	12-9090-7-R025
	Cover Shim 28 x 15	12-9090-7-A15
	Cover Shim 28 x 20	12-9090-7-A20
	Cover Shim 28 x 30	12-9090-7-A30
	Cover Shim 28 x 35	12-9090-7-A35
	Bleed Shim 4 bleed x 20 x 2mm wide slot	12-9090-7-B20